

## High specification holiday lodges with eco-friendly heat

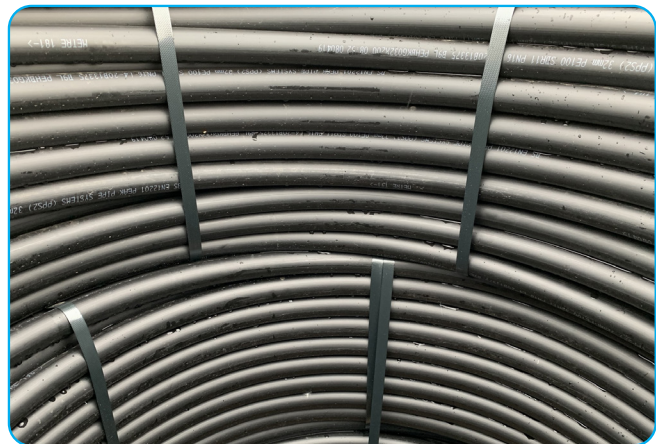
Ground source heat pumps provide low-carbon heating and are also a low-cost way to heat buildings using renewable energy. For this recent project, the ground collector PE pipe array absorbs ambient heat from underground. The heat pump increases the water temperature, which is then supplied to a large calorifier before being supplied to the luxury holiday lodges, which also have solar PV and panel heating.



### The challenge

Mibec supplied 2800m of ground collector PE pipe to the project, which was then made into array loops and sunk into their pond to be used in connection with their ground source heat pump.

We received the order at short notice, and the project was at risk of stalling if we did not deliver on time. Our team supplied and installed the ground collector pipe within 48 hours of receiving the order, which allowed the heat pump installation to proceed as planned.



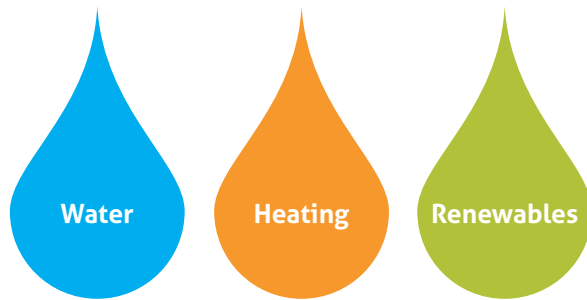
### Innovation

This specialist pipe was delivered at a competitive price and in the 200m lengths the customer requested. At Mibec, we can advise you on a range of pipework and help you meet your project's deadlines, even at short notice.

To find out how we can deliver the pipework you need for your renewable energy project, speak to our expert team on 01782 959170.

*Images for illustration purposes only*





**Mibec Limited**

Unit 12  
Arlington Court  
Cannel Row  
Silverdale Enterprise  
Newcastle-Under-Lyme  
ST5 6SS

Tel: +44 (0) 1782 959170

Web: [www.mibec.co.uk](http://www.mibec.co.uk)  
Email: [customerservices@mibec.co.uk](mailto:customerservices@mibec.co.uk)